



CREATING A BETTER FUTURE

A HOLISTIC APPROACH TO SUSTAINABILITY

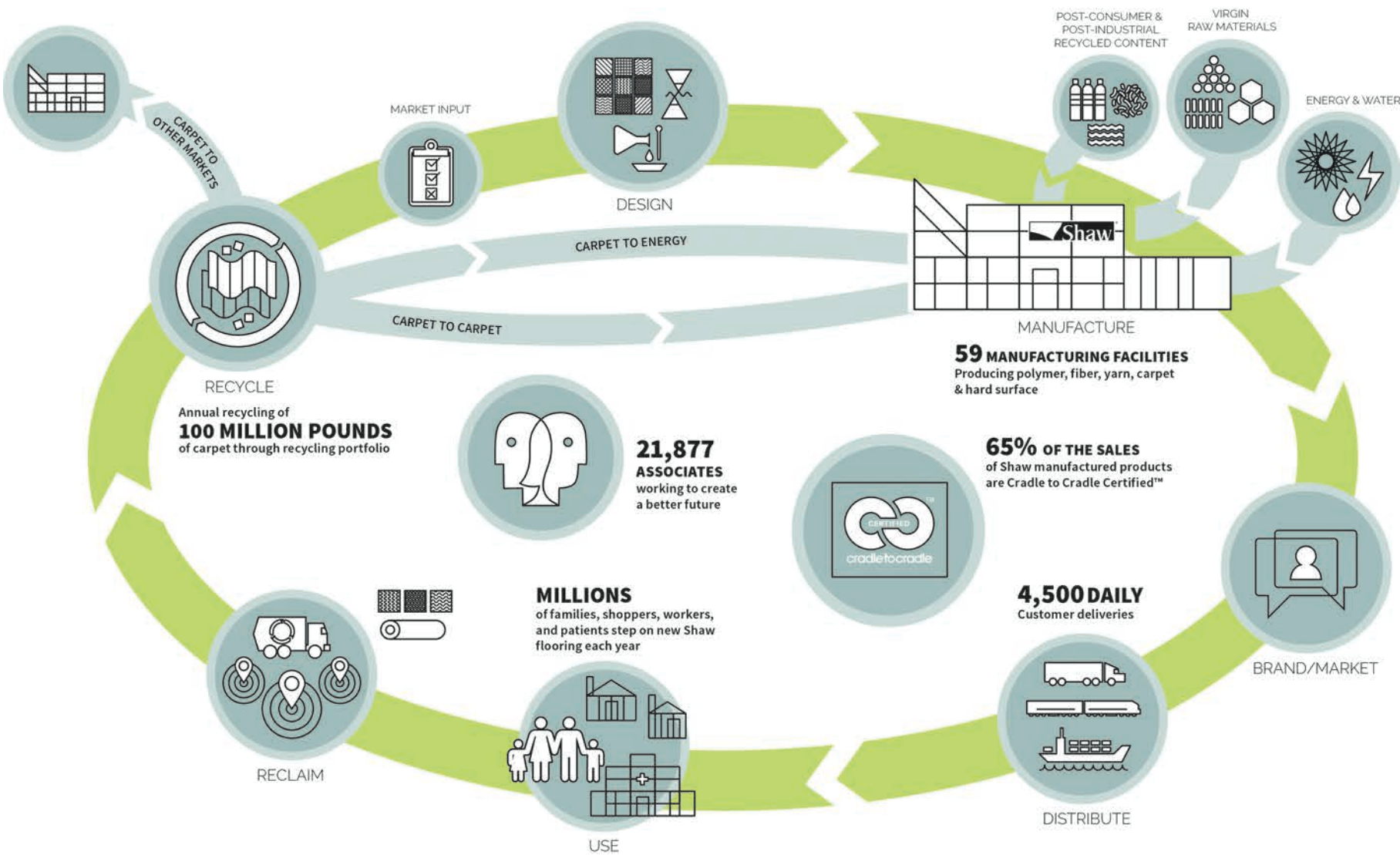
# Shaw's Sustainable Business Strategy

- Driving innovation into the business
- Protecting and making efficient use of resources
- Engaging our associates, customers, stakeholders, and communities
- Focusing on long-term financial success



Every material. Every process.  
Every action. Creating a better future.

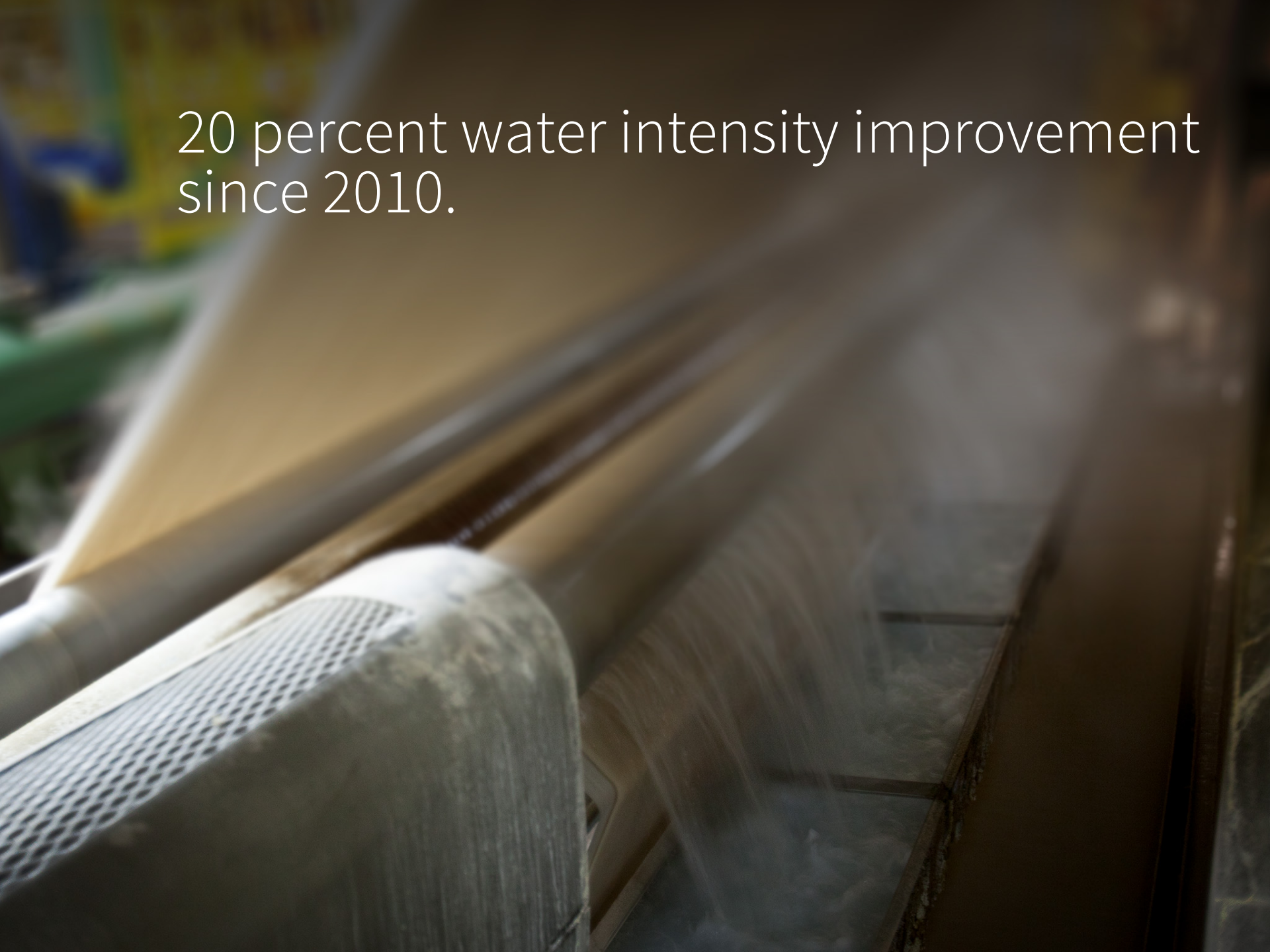




# 2030 Sustainability Goals

- Reduce water intensity by 50 percent
- Reduce energy and carbon emissions intensity by 40 percent
- Reduce waste to landfills and hazardous waste by 100 percent
- Design 100 percent of our products to Cradle to Cradle protocols
- Achieve an OSHA incident rate of zero

20 percent water intensity improvement  
since 2010.





Energy intensity improvement: 15%

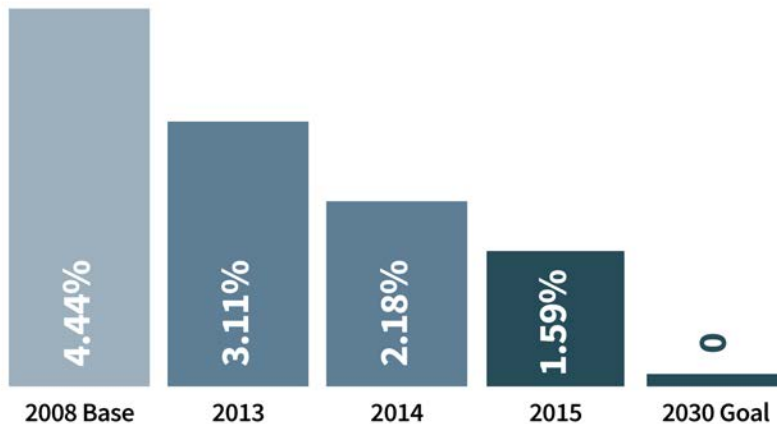
GHG emissions intensity improvement: more than 15%



# Waste

## WASTE INTENSITY

percent lbs. landfill waste per lb. finished product



## HAZARDOUS CHEMICAL WASTE DISPOSAL

units represented in lbs.

Under Construction





66 percent of the sales of Shaw manufactured products are Cradle to Cradle Certified™.



Material  
Health



Material  
Reutilization



Water  
Stewardship



Renewable  
Energy



Social  
Fairness



2015 incident rate of: 1.94





2015 incident rate: 1.94



# 3 LEED Silver buildings in 2015

For a total of 7 LEED certified projects

With 3 additional in progress





2015:

67,000+ volunteer hours

\$4.5 million+ in corporate and associate giving (including in-kind)

